



STEWART ENGINEERING
 3700 NORTHBROOK DRIVE, STE. 7
 NORTHPORT, ALABAMA 35473
 205 339 2665 205 339 2667 Fax

A New Restaurant for:
Papa's Pizza
 Orange Beach, Alabama

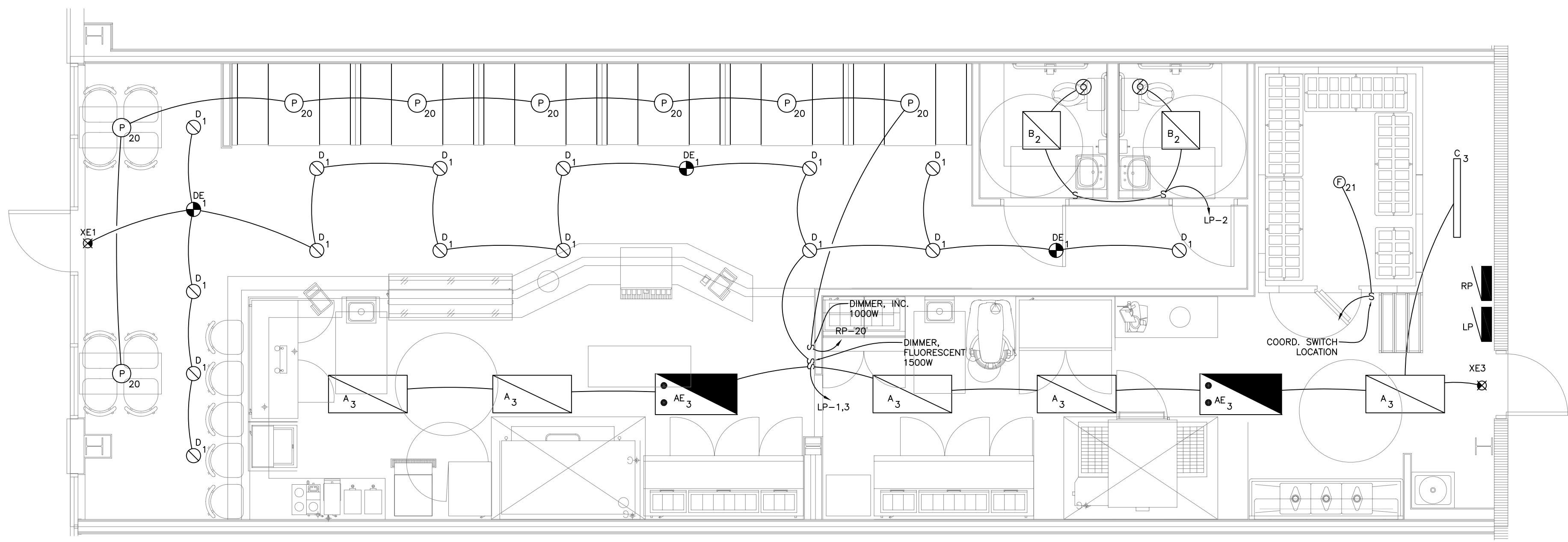


REVISIONS:

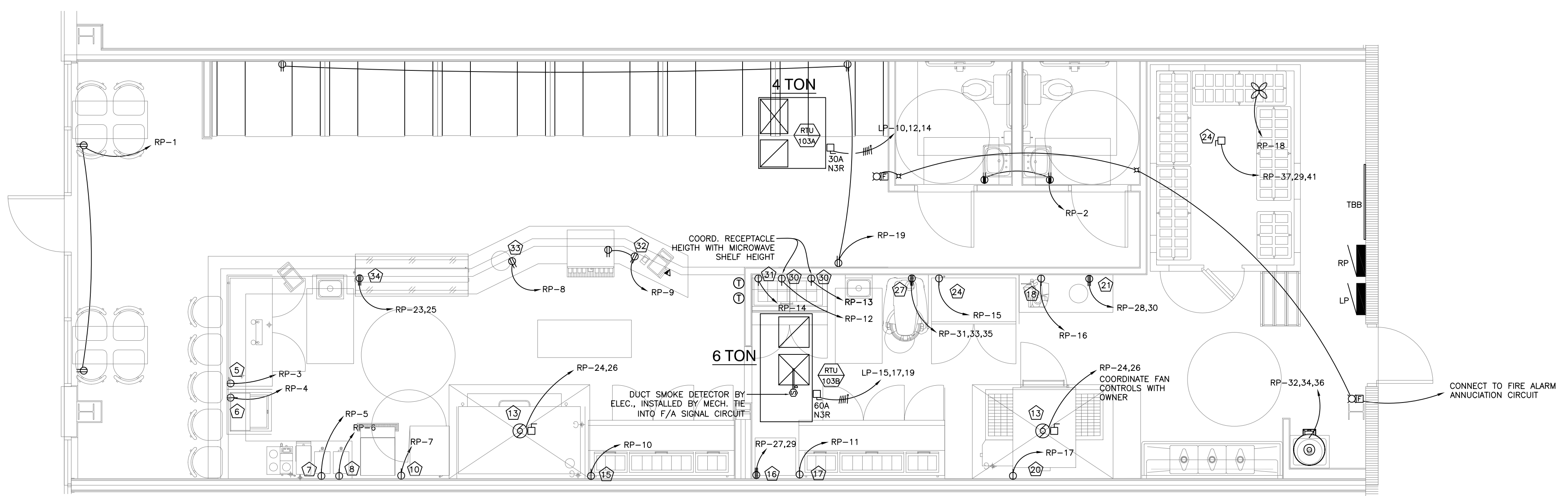
ELECTRICAL PLANS
 Project Number: 05204
 Drawn By: Wade Stewart
 Date: April 18, 2006
 Sheet Number:
E101

PERMIT DRAWINGS

FOOD SERVICE EQUIPMENT				
DESCRIPTION	VOLTAGE	AMPS	PHASE	POWER
1 SODA DISPENSER	120	5	1	600
2 NOT USED			N/A	
3 WORK TABLE			N/A	
4 HAND SINK			N/A	
5 BEER KEG COOLER	120	15	1	1800
6 GLASS / PLATE CHILLER	120	10	1	1200
7 COFFEE BREWER	120	14	1	1670
8 TEA BREWER	120	14	1	1670
9 ICE MAKER	120	0.958	1	115
10 ICE STORAGE BIN			N/A	
11 HOLDING/PROOFING CABINET	120	16	1	1920
12 PIZZA OVEN, DECK TYPE				0
13 EXHAUST HOOD				0
14 HAND SINK			N/A	
15 PIZZA PREP TABLE	120	9.7	1	1164
16 PIZZA PRESS	208	24	1	4992
17 PIZZA PREP TABLE	120	9.7	1	1164
18 FOOD SLICER	120	6	1	720
19 WORK TABLE			N/A	
20 DOUBLE STACK OVENS,	120	5	1	600
21 ELECTRIC BURNER	208	10	1	2080
22 WALK-IN COOLER			N/A	
23 INSIDE FAN UNIT	120	15	1	1800
24 COND. UNIT	208	20	3	7205.12
25 MOP SINK			N/A	
26 2 DOOR REACH-IN FREEZER	120	13.2	1	1584
27 WALL MOUNTED SHELF W/POT RACK			N/A	
28 THREE COMP. SINK			N/A	
29 FOOD MIXER	208	18	1	3744
30 CAN STORAGE RACK			N/A	
31 MICROWAVE SHELF			N/A	
32 MICROWAVE OVEN	120	15	1	1800
33 REFRIGERATED COUNTER, SANDWICH TOP	120	8.6	1	1032
34 CASH REGISTER	120	3	1	360
35 COUNTERTOP FOOD WARMER	120	5.8	1	700
36 BUFFET WARMER	208	10	1	2080



1 LIGHTING PLAN
 E101.1 SCALE: 1/4" = 1'-0"



2 POWER & AUX. PLAN
 E101.1 SCALE: 1/4" = 1'-0"

GENERAL ELECTRICAL NOTES:

1. COMPLY WITH THE NATIONAL ELECTRIC CODE, STATE AND LOCAL CODES.
2. OMISSIONS OR MISDESCRIPTION OF DETAILS OF WORK WHICH ARE NECESSARY TO CARRY OUT THE INTENT OF THE DRAWINGS, OR WHICH ARE CUSTOMARILY PERFORMED, SHALL NOT RELIEVE THE CONTRACTOR FROM PERFORMING SUCH OMISSIONS AND DETAILS OF WORK, BUT THEY SHALL BE PERFORMED AS IF FULLY AND CORRECTLY SET FORTH & DESCRIBED.
3. ALL RACEWAY EXPOSED ON THE EXTERIOR SHALL BE RIGID CONDUIT.
4. PORTIONS OF WALLS AND ARCHITECTURAL FEATURES MAY HAVE BEEN OMITTED FROM THIS PLAN FOR CLARITY OF ELECTRICAL FEATURES. REFER TO ARCHITECTURAL DRAWINGS FOR EXACT LOCATION OF WALLS AND FIXTURES, AND DIMENSIONS.
5. VERIFY FIELD DIMENSIONS. COORDINATE WORK WITH OTHER TRADES TO AVOID INTERFERENCES.
6. ALL EXIT AND EMERGENCY LIGHTS SHALL BE UNSWITCHED AND SHALL BE SERVED FROM THE SAME CIRCUIT AS THE GENERAL LIGHTING IN THE SAME AREA.
7. ALL ELECTRICAL PANELS SHALL HAVE ENGRAVED LAMINATED (BLACK ON WHITE) LABELS IDENTIFYING THEM AS INDICATED ON DRAWINGS.
8. ENSURE THAT ALL PENETRATIONS OF FIRE WALLS AND DECKS ARE PROPERLY SEALED PER IBC, ANY APPLICABLE UL ASSEMBLIES, AND THE SPECIFICATIONS.
9. ALL COMPONENTS USED IN PLENUM SPACES SHALL BE CONSTRUCTED OF NON-COMBUSTIBLE MATERIAL AND SHALL BE RATED FOR INSTALLATION IN PLENUM SPACES.
10. COLOR OF WIRING DEVICES AND PLATES SHALL BE AS SELECTED BY THE ARCHITECT.
11. THE LOCATIONS OF FIXTURES AND EQUIPMENT ON THE DRAWINGS ARE APPROXIMATE ONLY. OFFSET AS REQUIRED OR AS REQUESTED BY OWNER.
12. AVOID PENETRATING THE OUTER SKIN OF METAL BUILDING WALLS AND ROOF. MOUNT EQUIPMENT ON STRUCTURAL COLUMNS AND PURLINS WHERE POSSIBLE. PROVIDE MOUNTING STRUT BETWEEN STRUCTURAL MEMBERS WHERE NECESSARY. FOR ANY UNAVOIDABLE ROOF PENETRATION, ENSURE THAT METAL BUILDING MANUFACTURER'S ROOF WARRANTY REQUIREMENTS ARE SATISFIED.
13. CONDUCTOR SIZES INDICATED ON THE DRAWINGS HAVE BEEN SELECTED TO PROVIDE FOR ACCEPTABLE VOLTAGE DROP. DO NOT REDUCE WIRE SIZES SHOWN WITHOUT CONSENT OF ENGINEER.

FIRE ALARM SYSTEM NOTES:

1. THE FIRE ALARM WIRING SYSTEM SHALL BE FURNISHED AND INSTALLED IN ACCORDANCE WITH THE MANUFACTURER'S REQUIREMENTS FOR THE SYSTEM SPECIFIED AND AS FOLLOWS:
 POWER, 120VAC, #12 AWG
 NOTIFICATION APPLIANCE CIRCUITS (NAC), 24VDC, #14 AWG, NFPA 72 STYLE Z (CLASS B)
 SIGNALING LINE CIRCUIT (SLC), 24VDC, STYLE 5 (CLASS B)
 ALL CLASS 'A' CIRCUITS SHALL BE INSTALLED SUCH THAT THE OUTGOING AND RETURN CONDUCTORS, EXITING FROM AND RETURNING TO THE CONTROL UNIT RESPECTIVELY, ARE ROUTED SEPARATELY AND NOT ROUTED THROUGH THE SAME CABLE OR RACEWAY. A LOOP CIRCUIT SYSTEM SHALL BE UTILIZED.